



**BOEN**

# Boen Herringbone Click

Product installation  
instructions

YOUR STYLE • YOUR FLOOR

# General Information

Parquet according EN 13489 and EN 14342 for indoor use

Format: 14 x 138 x 690 mm

A-planks and B-planks are delivered separately

Calculate appr. 10% excess cutting waste

Checking of the goods needs to be done prior to installation

Boen Herringbone Click is provided with the 5G Click connection, which is a glueless connection and suitable for floating installation. This product can also be fully glued down.

Maximum installed area: 100sqm (floating installation)

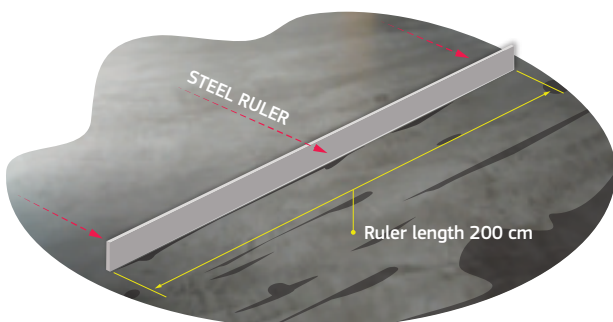
---

## Preparations

**Subfloors must be checked prior to installation**

Dry – level – clean

Remarks on height tolerances (max. +/- 3mm over 2 meter)



**Acceptable subfloors**

Floating method possible on most subfloors: concrete, wood, chipboard, plywood

Sub-floor must be dry, even and self-supporting

**Non-Acceptable subfloors**

All types of carpeting and thick cushioned floors

**Climatic conditions of the subfloor**

Humidity content of concrete, sand cement screed: max. 2,0

CM% / 90% RH (max. 1,8 CM% if installed on under floor heating)

**Installation on floor heating**

Installation temperature: between 15 °C and 25 °C

Never more than 29 °C on the surface of the parquet floor (max 27 °C in Scandinavia due to different climatic conditions)

**Climatic conditions**

Remarks on acclimatization & storage:

- ▶ Min. 48 hours in unopened packages in room temperature
- ▶ Windows and doors must be installed

Recommended climate conditions in the room:

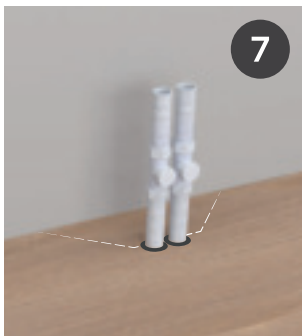
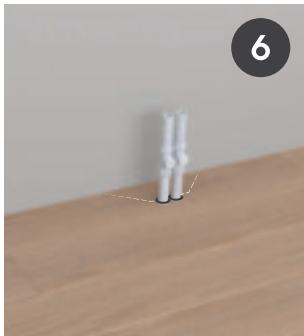
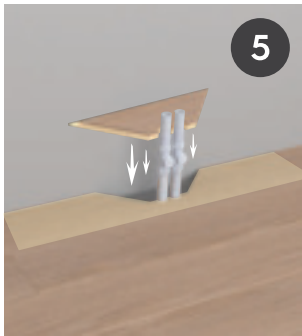
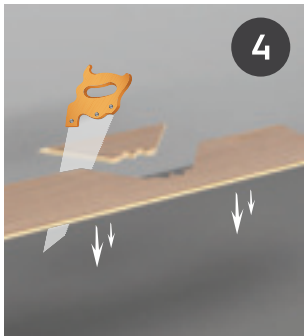
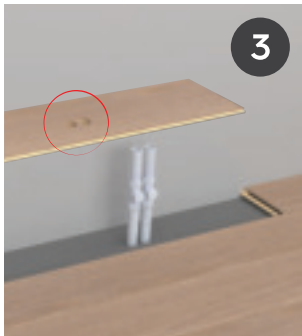
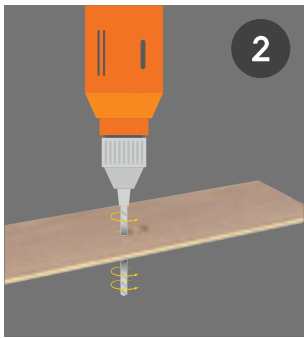
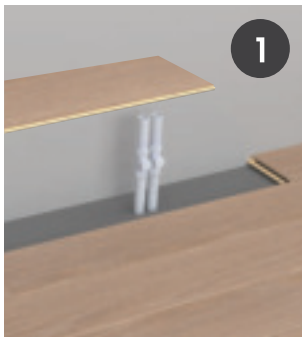
- Air temperature: >18° Celsius
- Floor temperature: >15° Celsius
- Relative Humidity during installation: 30-65%

### During installation

Expansion to wall 1,5mm/m width panel

Min 8 - 10 mm clearance to fixed points

How to saw holes for radiator pipes and other protrusions



### Underlayment

An underlay needs to be installed prior to the installation (Floating method) the underlay material should be thin and slightly compressible

Minimum requirements for PE-foam underlayment:

50.000 cycles after EN 1379 and 60kPa after EN 826

Recommended product: Maxima

# Needed Tools

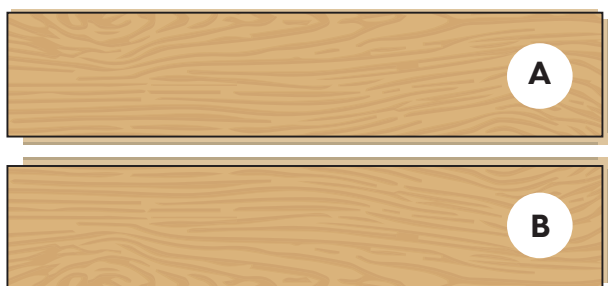
1. Tapping block
2. Jig Saw
3. Sliding Mitre Saw
4. Fine pencil
5. Ruler
6. Straightedge (2 m)
7. Spacers
8. Releasing tool (included with delivery).

Article number: A718N000

## Installation

### *1. Preparations in the room*

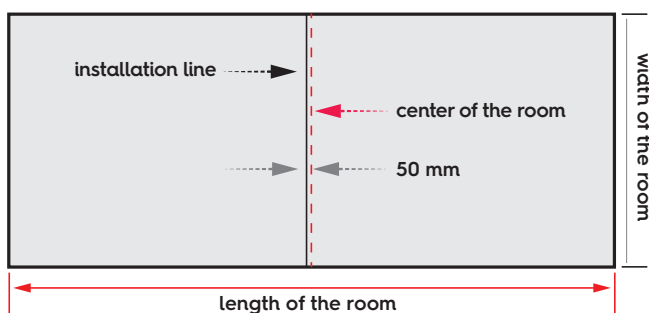
Separate A-planks and B-planks. They are identified as shown below, there is an additional stamp in the profile on the backside indicating A or B.



Define the wall from where you intend to start the installation.  
Define the center of the room and draw the installation line  
50mm left from the center line.

#### **Calculate the number of needed starting triangles:**

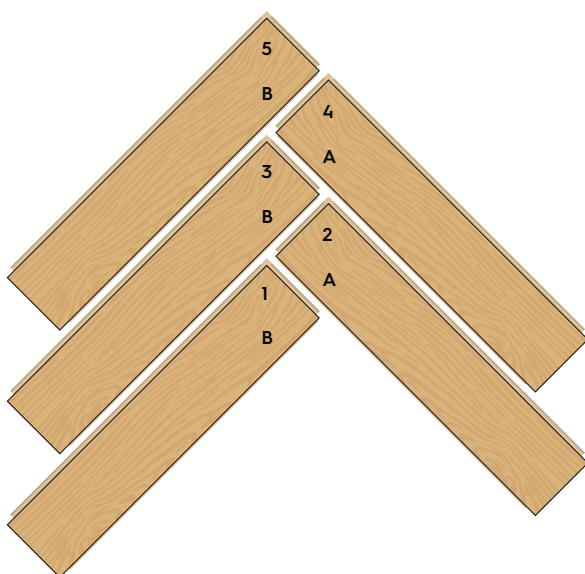
- Measure the length of the wall where you intend to start, in mm.
- Add 50mm and divide that length by 976 mm.  
Then round up to the next full number.



- Example: wall length = 5,300mm + 50mm = 5,350mm  
5,350 mm divided by 976 mm = 5,48  
next full number = 6  
build 6 starting triangles

## 2. Build starting triangles

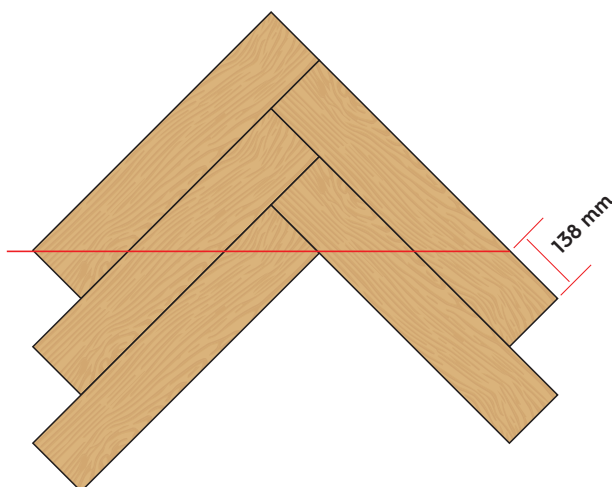
- Take 3 B-planks and 2 A-planks and position them as follows:

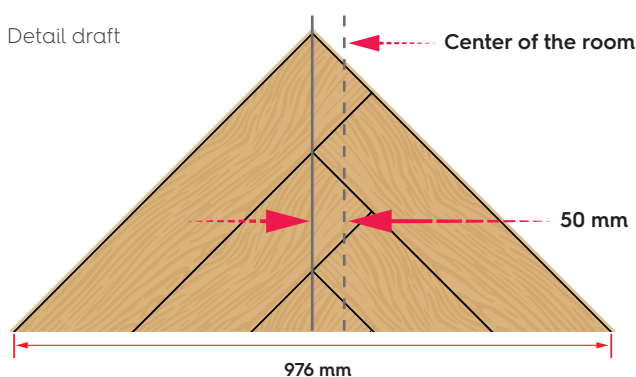


Install the boards precisely and in the order indicated by the numbers on the boards. Carefully check the joints between the planks after every plank which is added. No protruding edge may be felt!



Cut the triangle according to the line indicated below. Depending on the kind of saw that you use, it may be useful to dismantle the triangle before sawing. The excess (below the line) is to be saved.

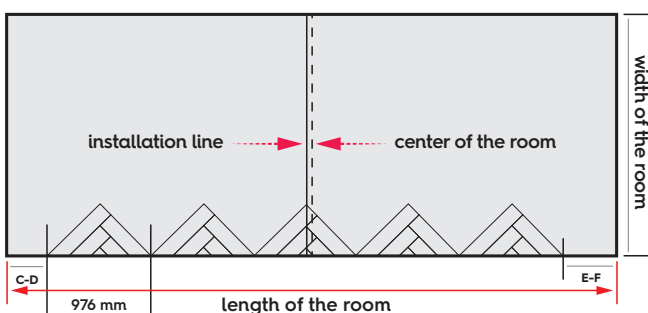




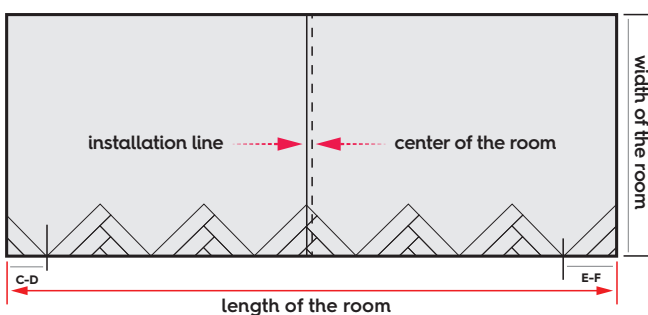
In case you have calculated and built an uneven number of triangles, leave the outer two triangles aside. For the case that you have built an even number of triangles, lay one aside. Lay out the middle triangles with their long side towards the starting wall. Make sure the underlayment is installed beforehand and the installation line remains visible.

Use expansion wedges for the expansion gap. Make sure the top of the centered triangle is on the installation line (50 mm left from the center). Check the straightness of the starting wall. If it is not perpendicular to the center line, the starting triangles need to be adjusted.

Now the room needs to look like in the drawing below:



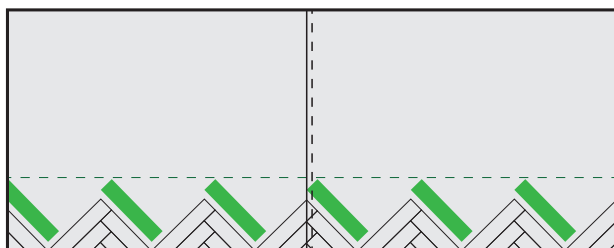
Now cut the distances C-D and E-F from the remaining triangle(s). And position them.



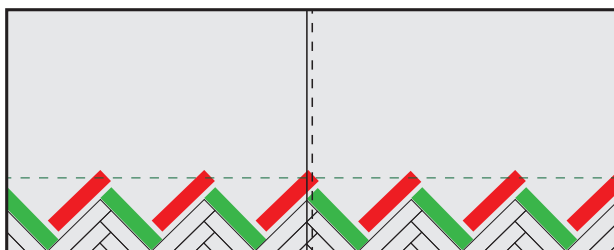
### 3. Start of the installation

Install A-planks to connect all triangles. The joints between the A-plank and the triangle need to be checked very carefully. No protruding edge may be felt! The planks need to be locked into one another, using the 5G Click system. The connection of a new board is confirmed by a slight clicking sound. Push a plank down, in case the connection does not fix the plank.

Cut the most left piece to fit into the room, considering an expansion gap. Measure the straightness of the installation along the green line. Repeat that measuring with the straightedge progressively throughout the installation. Deviations need to be corrected, should they occur (schematics below).



Now install B-planks and cut the most right piece to size.



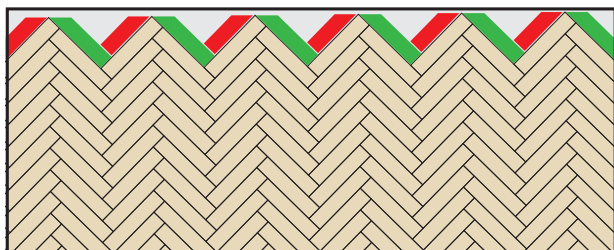
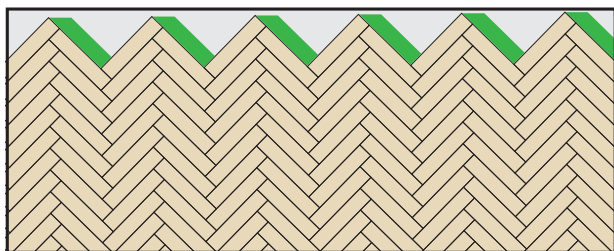
This alternating installation of A-planks and B-planks continues throughout the whole room. It is important to check frequently that:

- ▶ all expansion wedges remain in their position
- ▶ all joints are closed and the planks are locked into one another. If necessary, use a tapping block to push a plank into the right position.
- ▶ you follow the installation line.
- ▶ the tops of the boards in one line remain straight and perpendicular to the installation line (measure approx every fifth row.)



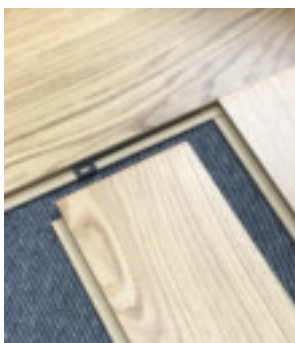
The last rows:

Dismantle the excess material from the triangles. Use it to close the open gaps to the finishing wall. Use the leftover from planks 1, 2, etc. consecutively and cut to size if necessary.



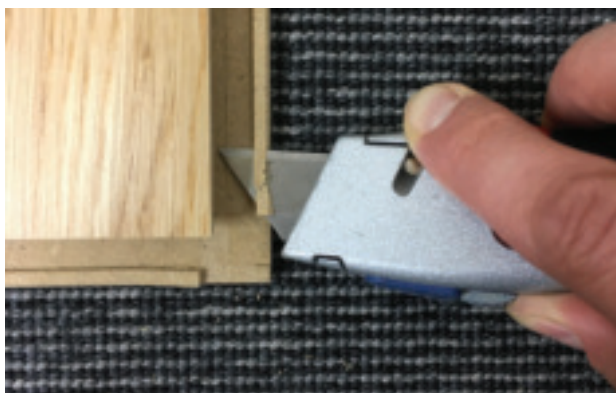
#### ***4. Practical information***

When a plank is locked, it is not possible to take it up by hand. Use the black releasing tool which is part of your delivery. Press it into the groove as far as possible. It pushes back the flexible tongue and releases the plank for dismantling. Use some power to lift up the plank at its long side.



When angling is not possible or you need to install backwards.

Remove the locking element according to the picture and use white PVAc glue to connect the planks.







***BOEN Main Office***

BOEN AS  
4658 Tveit, Norway  
Phone: +47 38 06 66 00

***Region: Scandinavia***

BOEN Bruk AS  
4658 Tveit, Norway  
Phone: +47 38 06 66 00

***Region: Western Europe***

BOEN Parkett Deutschland  
GmbH & Co. KG  
Papenkamp 2-6, 23879 Mölln,  
Deutschland  
Phone: +49 4542 8003 0

***Regions: Central and Eastern Europe***

BOEN Lietuva, UAB  
Siltnamiu Street 6, 21411 Kietaviskės,  
Elektrėnu sav. Lithuania  
Phone: +370 686 551 55

***Region: France***

BOEN Service Commercial France  
1, Place de l'Abattoir  
F - 67190 Mutzig  
Phone: +33 3 88 99 36 45

***Regions: UK, Republic of Ireland***

BOEN UK LTD  
320-322 Beech Drive,  
Hartlebury Trading Estate,  
Hartlebury, Worcestershire, DY10 4JB  
Phone: +44 (0) 800 652 5280

***Regions: USA and Canada***

BOEN Hardwood Flooring Inc.  
1156 Pelican Bay Drive  
Daytona Beach, FL 32119  
Toll free: +1 877 638 3078

***Region: Asia***

BOEN Asia  
Unit 1302D, 13/F Block B,  
Seaview Estate, 4-6 Watson Road,  
North Point, Hong Kong  
Phone: +852 2367 1000 / 1012